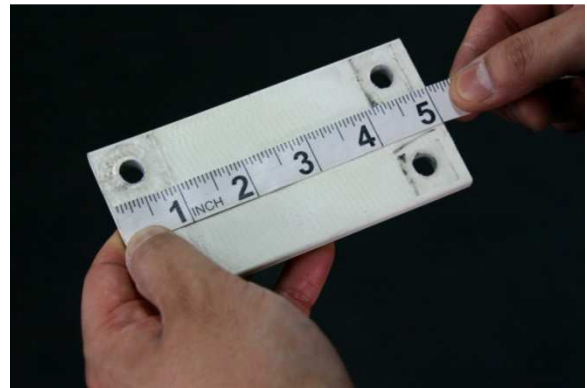
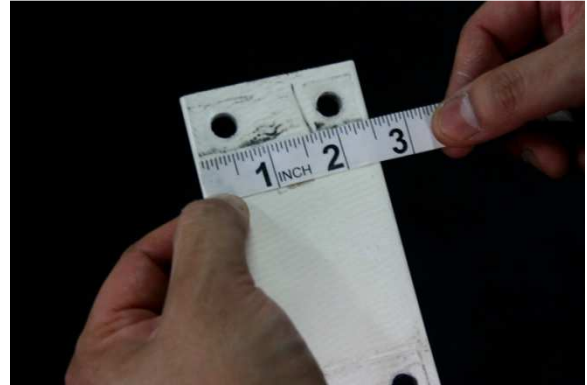


Fiber Glass Spring Plate Installation



Most outdoor furniture swivel chairs use two spring plates which allow the chair to rock back and forth. Overtime, the fiber glass spring plates eventually weaken through extended use and from being exposed to the outdoor elements resulting in the softening of the spring plates or breakage. If you find that your outdoor swivel chair has too much rocking action it may be time to replace the fiber glass spring plates on the swivel bases of your patio chairs.

Chair Care patio makes it easy for anyone to repair the fiber glass spring plates of their outdoor patio furniture. Chair Care Patio furniture repair offers two sizes of fiber glass spring plates, 2½" x 5" and 3" x 5". Measure the original fiber glass spring plates of your outdoor patio furniture to determine the size of the replacement parts needed.



Begin by removing the original spring plates from your outdoor swivel chair. Pay close attention to how your outdoor furniture chair frame is assembled and take pictures if needed. The chair frame will be reassembled in the same fashion so it is important to take note of how your outdoor patio chair came apart.



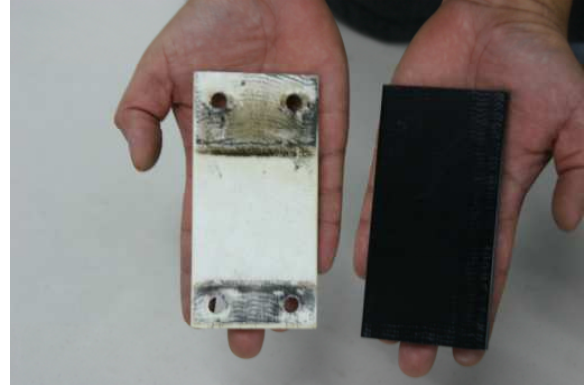
ChairCarePatio



It is very important to keep all the original hardware that has been removed from your outdoor chair frame as it will be needed for re-installation of the replacement parts offered by Chair Care Patio.



The fiber glass spring plate replacement parts offered by Chair Care Patio do not ship with pre-drilled holes. Before installation of your new fiber glass spring plates, four holes will need to be drilled in the same position as the holes in the original spring plates removed from your chair frame.



Chair Care Patio furniture repair recommends using your original spring plate as a template for the location of the holes on the new replacement parts.



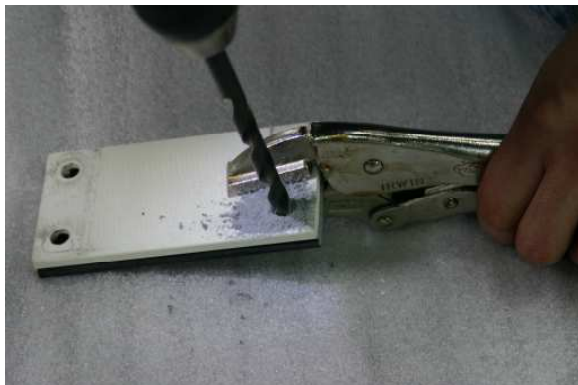
Stack the original spring plate on top of the replacement spring plate. Chair Care Patio furniture repair suggests using vice grips to hold the original and replacement plates together while drilling.



ChairCarePatio



With the spring plates lined up in position, drill through the holes in the original spring plate and into the new spring plate. Chair Care Patio furniture repair suggests using a 3/8" drill bit for this process



After drilling the holes in the new fiber glass spring plates, the replacement spring plates can be spray painted to match your outdoor patio chair frame. For best results Char

Care Patio recommends lightly sand the new spring plates with fine sand paper before spray painting.



Once dry, install the new replacement spring plates to your outdoor patio furniture chairs using the original hardware.



This completes the installation of fiberglass spring plates for swivel base patio furniture chairs.